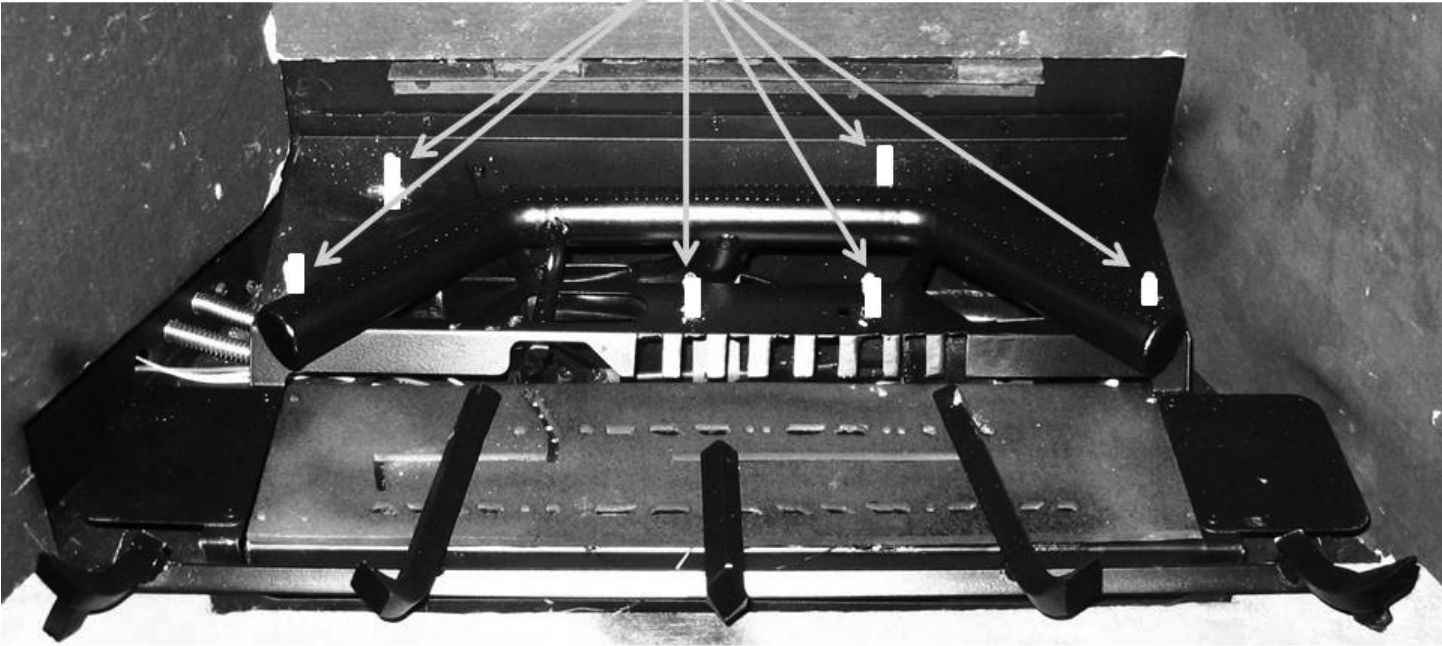
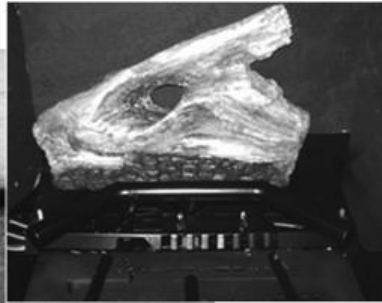


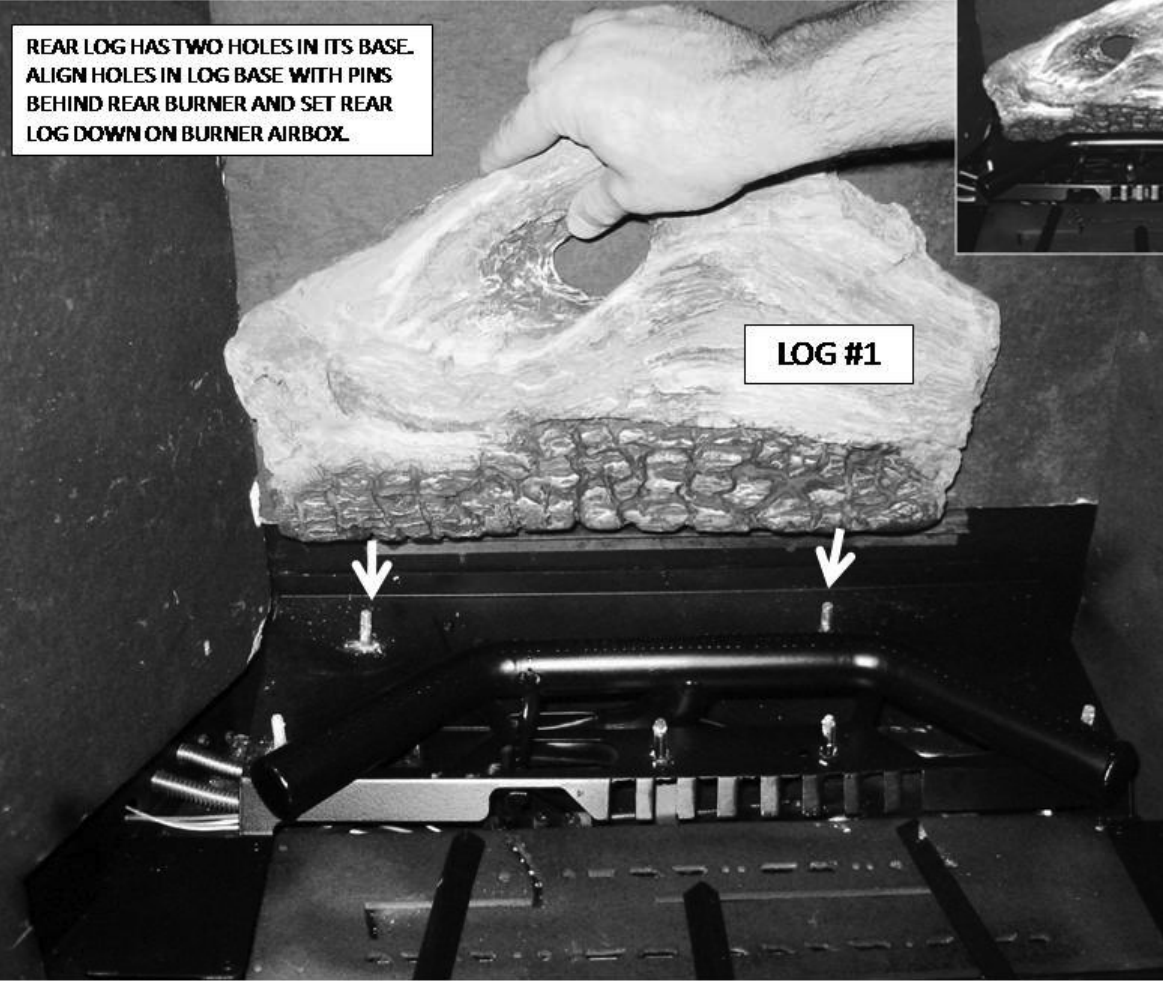
**LOG PIECES LOCATER PINS**

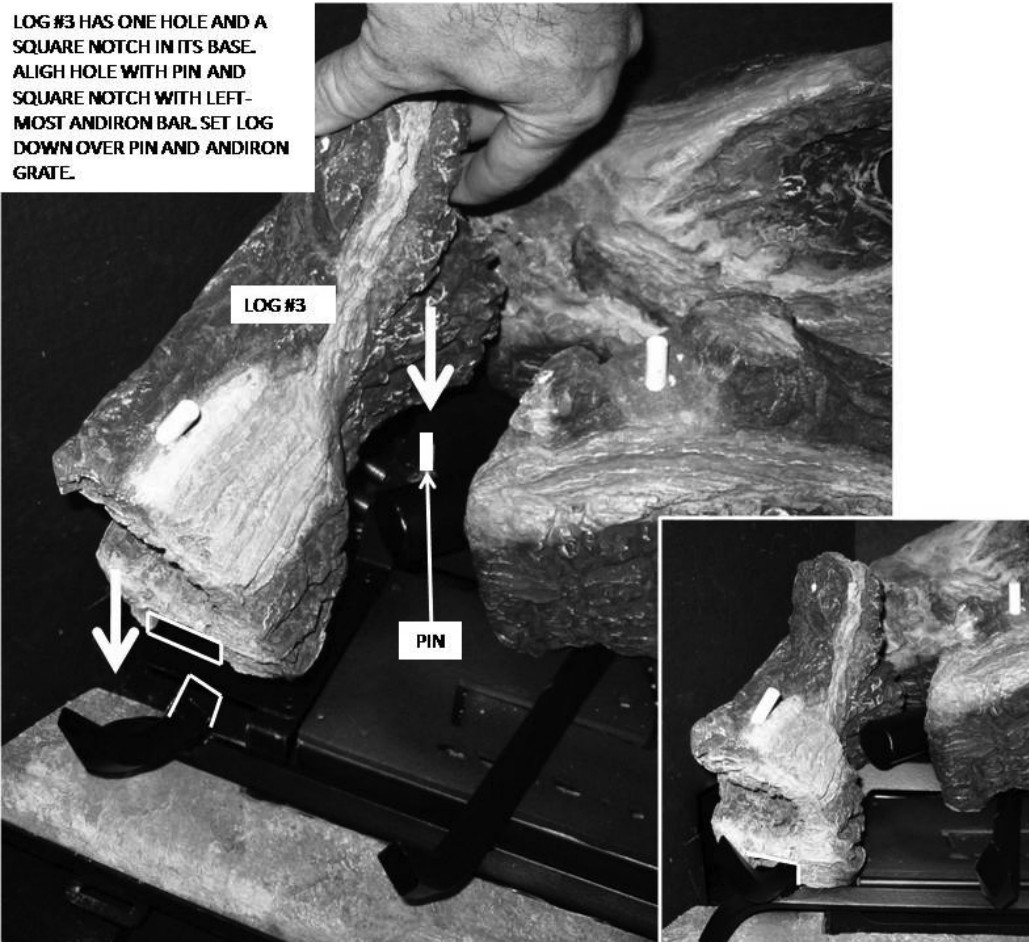
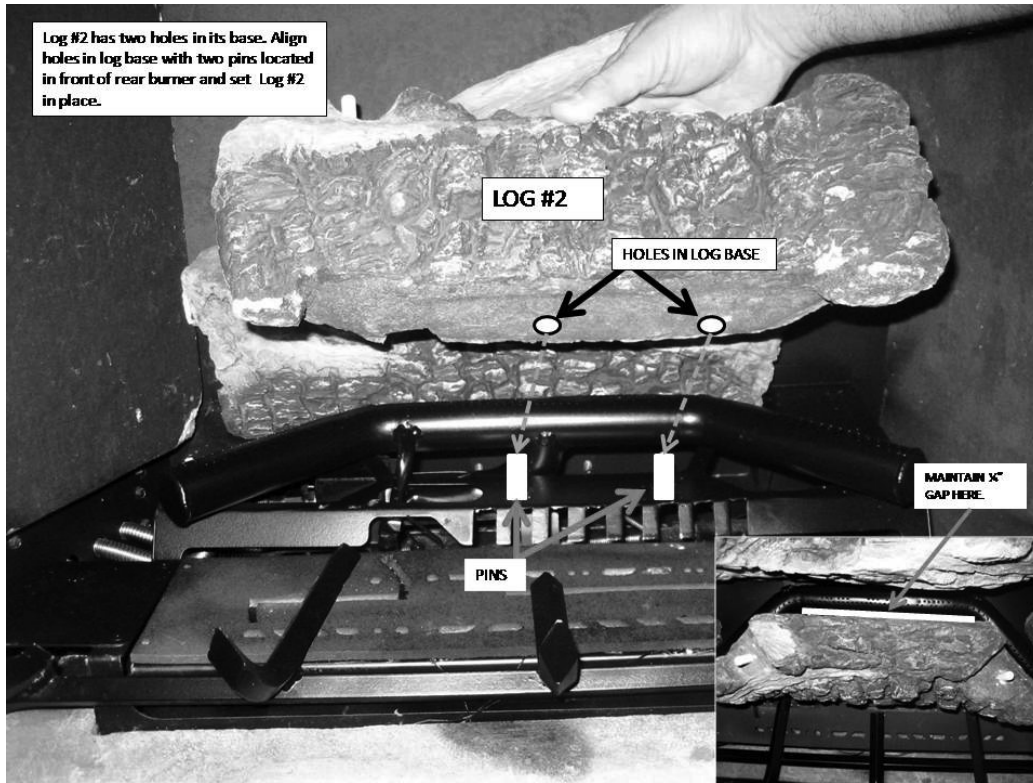


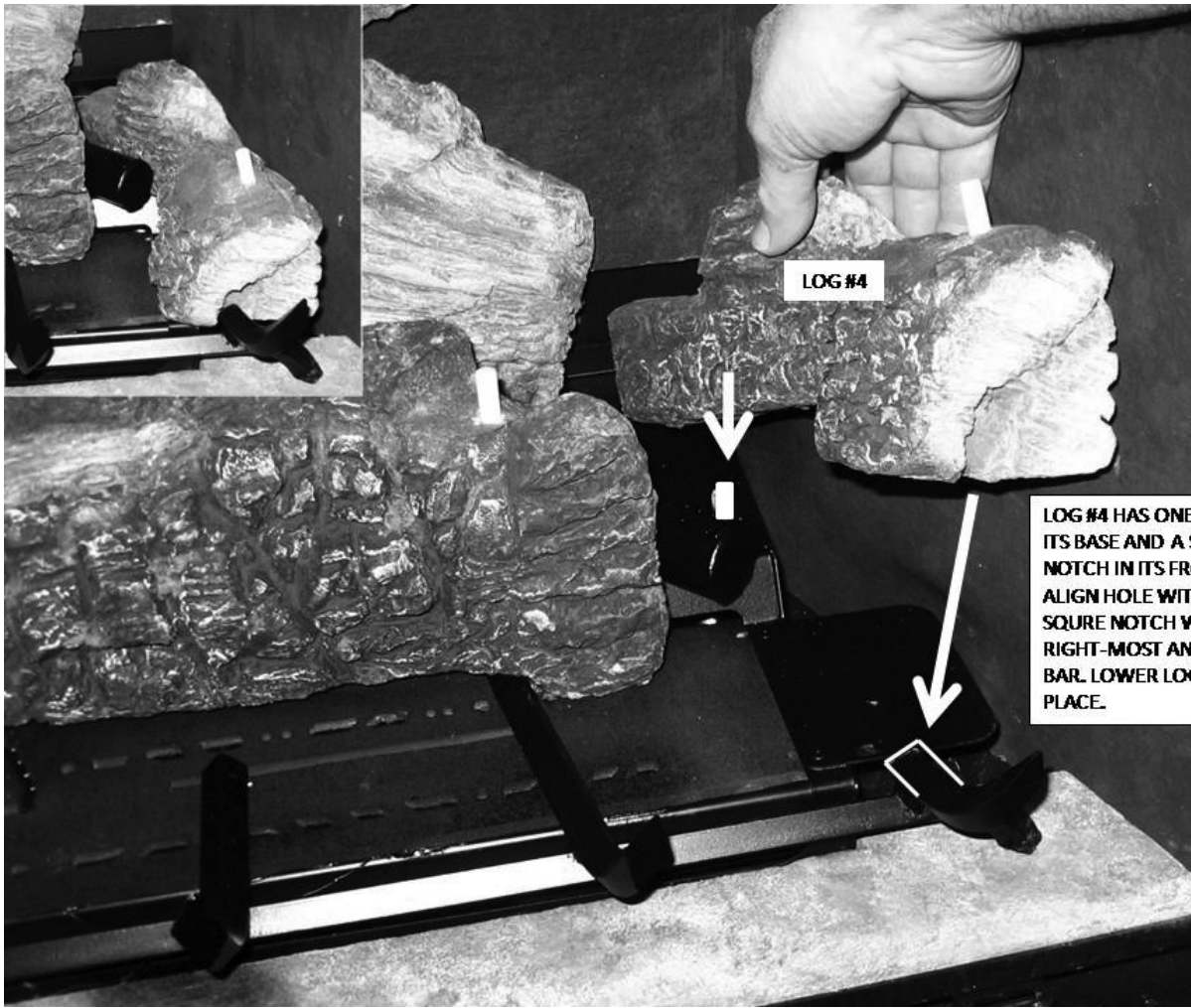
**REAR LOG HAS TWO HOLES IN ITS BASE. ALIGN HOLES IN LOG BASE WITH PINS BEHIND REAR BURNER AND SET REAR LOG DOWN ON BURNER AIRBOX.**



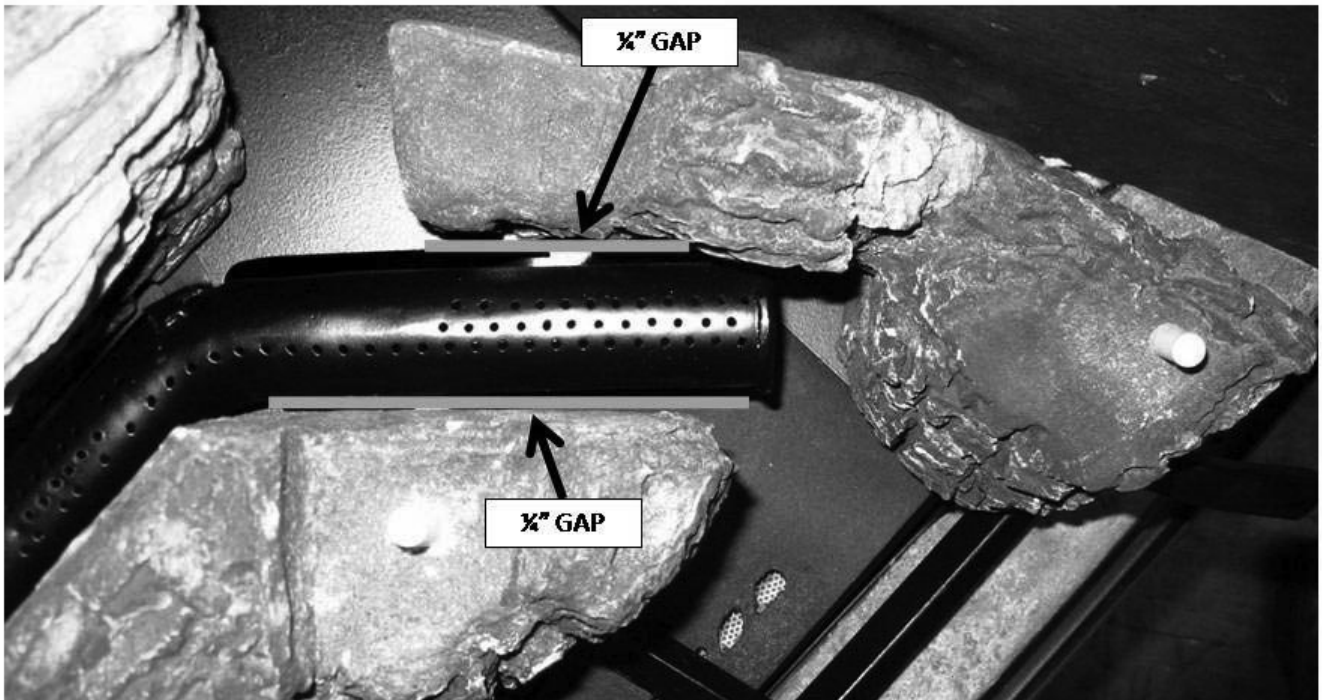
**LOG #1**

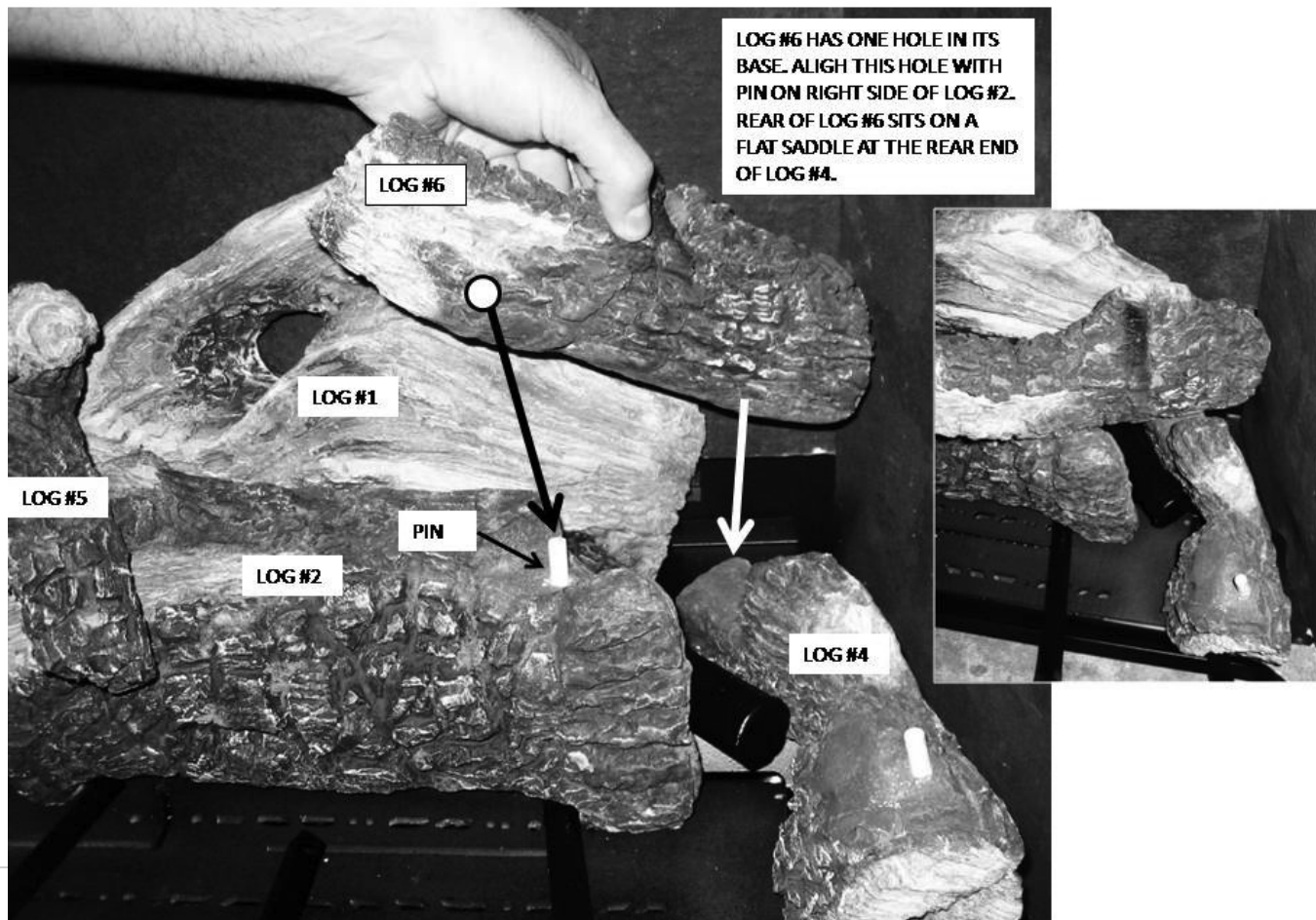
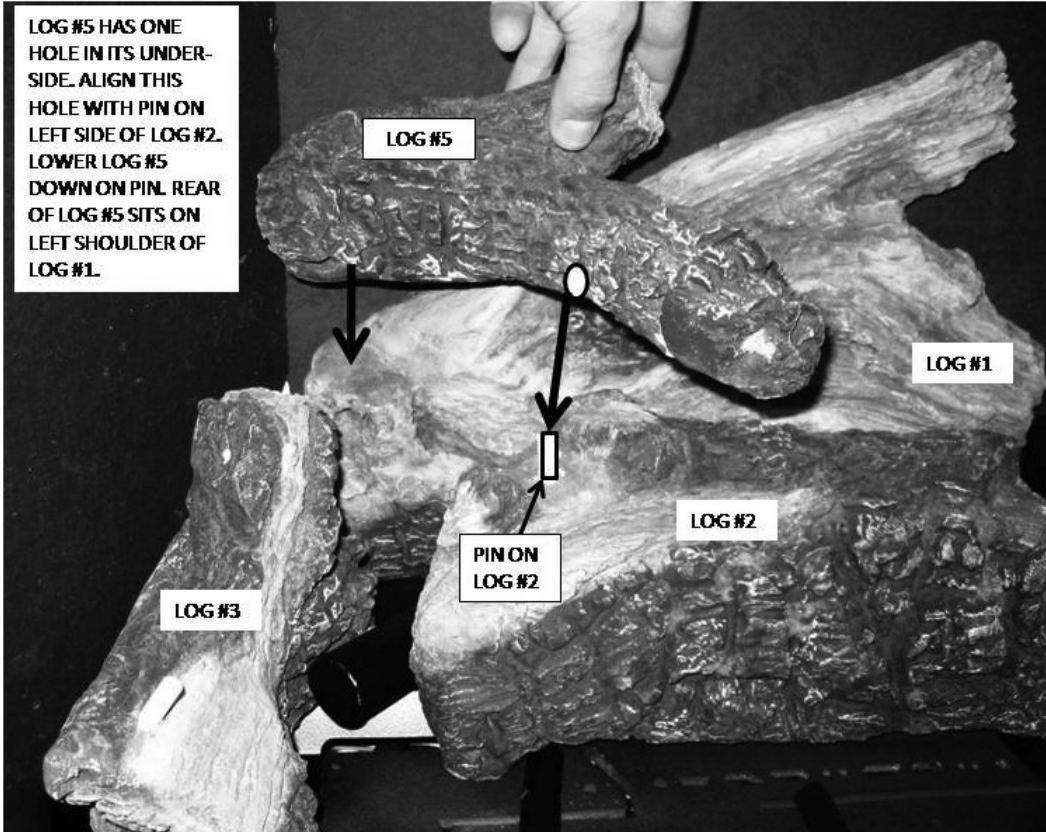






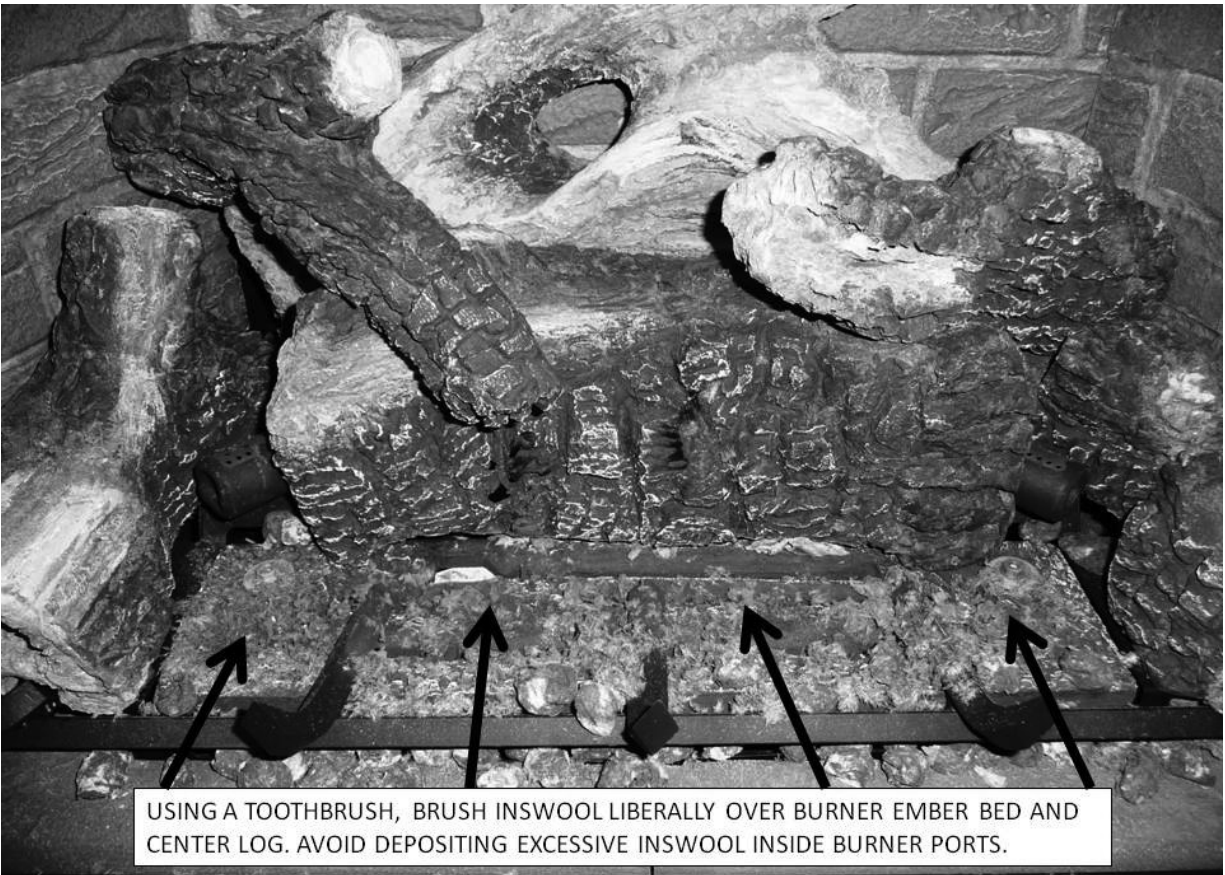
LOG #4 HAS ONE HOLE IN ITS BASE AND A SQUARE NOTCH IN ITS FRONT FACE. ALIGN HOLE WITH PIN AND SQUARE NOTCH WITH RIGHT-MOST ANDIRON BAR. LOWER LOG #4 IN PLACE.



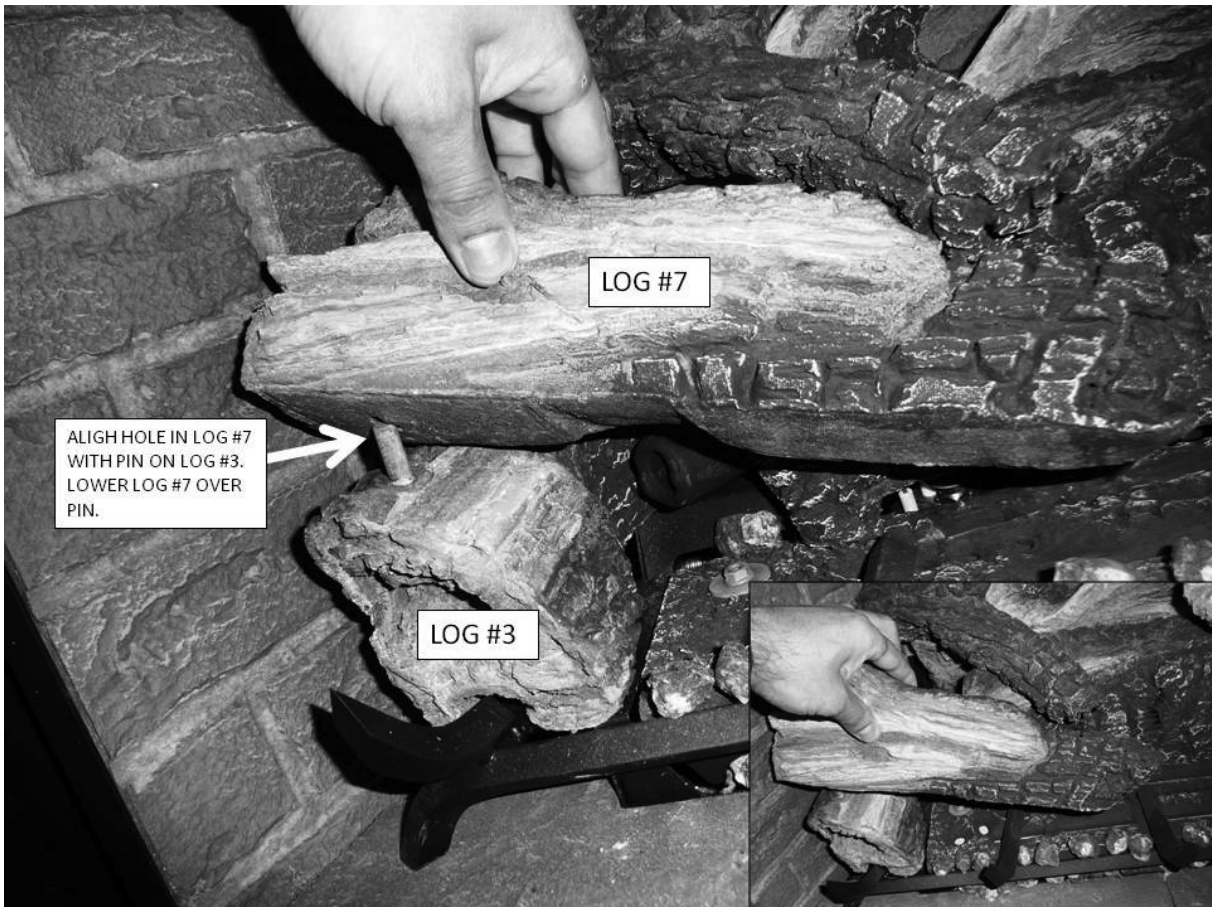
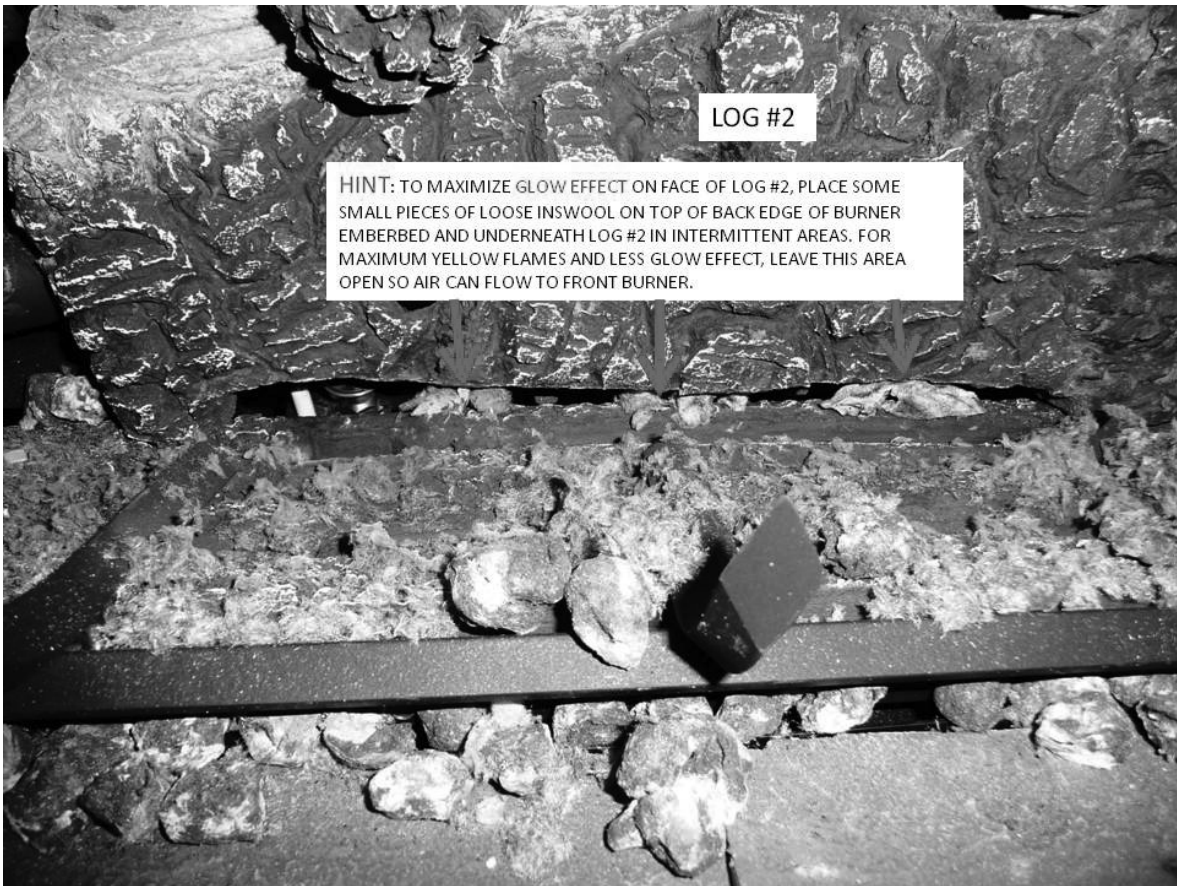


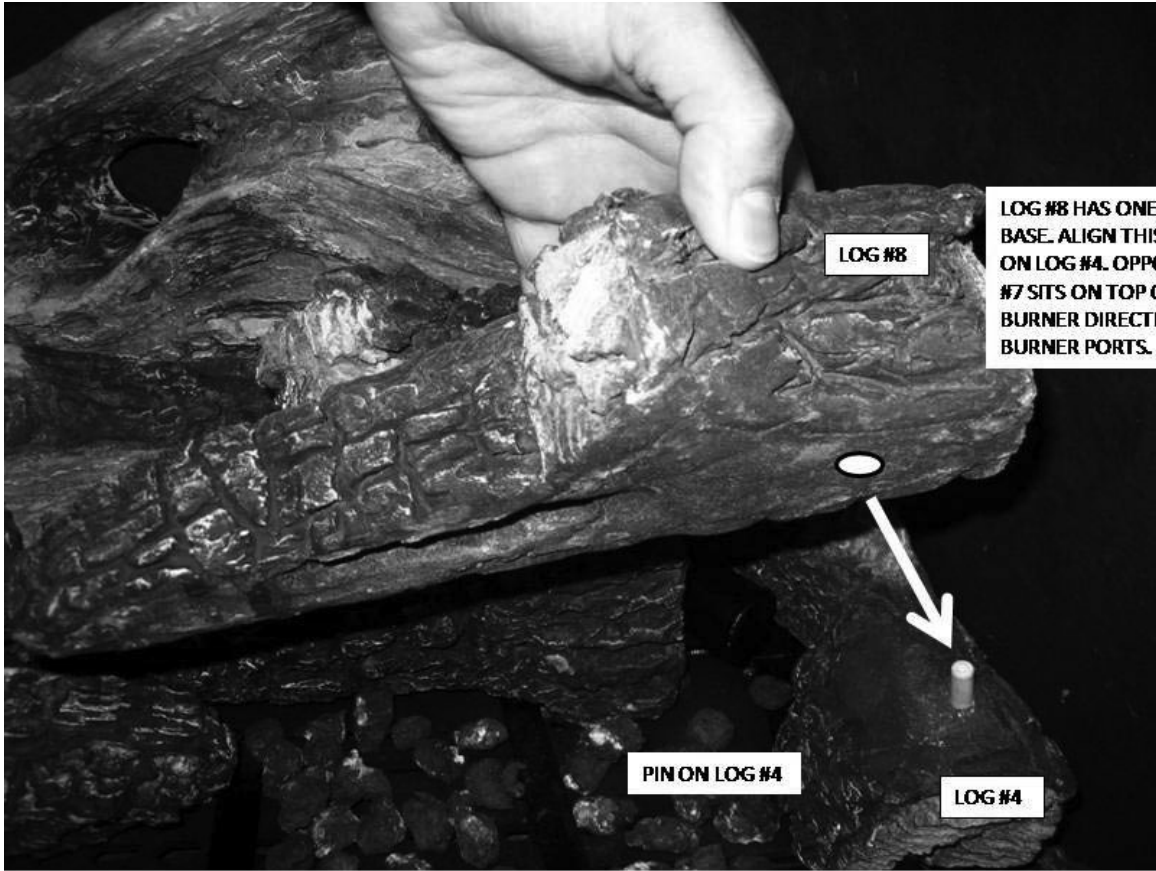


PLACE SMALL COALS LOOSELY ALONG GRATE BAR ONLY.



USING A TOOTHBRUSH, BRUSH INSWOOL LIBERALLY OVER BURNER EMBER BED AND CENTER LOG. AVOID DEPOSITING EXCESSIVE INSWOOL INSIDE BURNER PORTS.





**LOG #8 HAS ONE HOLE IN ITS BASE. ALIGN THIS HOLE WITH PIN ON LOG #4. OPPOSITE TIP OF LOG #7 SITS ON TOP OF FRONT BURNER DIRECTLY BEHIND FRONT BURNER PORTS.**

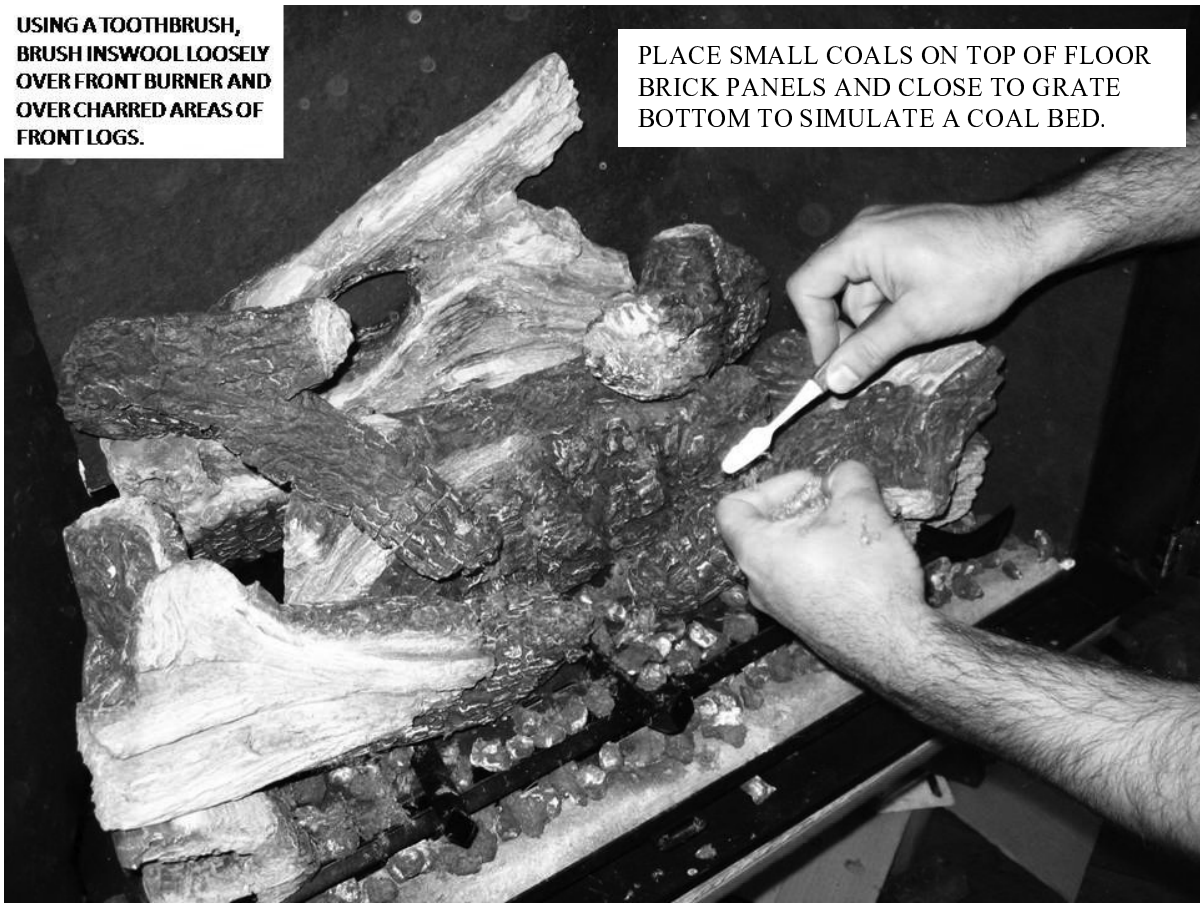


**TIPS OF LOG #7 AND LOG #8 MUST SIT ON SHADED AREAS SHOWN. DO NOT PLACE TIPS OF THESE LOGS ON TOP OF BURNER EMBER BED'S GAS PORTS.**



**USING A TOOTHBRUSH,  
BRUSH INSWOOL LOOSELY  
OVER FRONT BURNER AND  
OVER CHARRED AREAS OF  
FRONT LOGS.**

**PLACE SMALL COALS ON TOP OF FLOOR  
BRICK PANELS AND CLOSE TO GRATE  
BOTTOM TO SIMULATE A COAL BED.**



**COMPLETED LOG SET**

